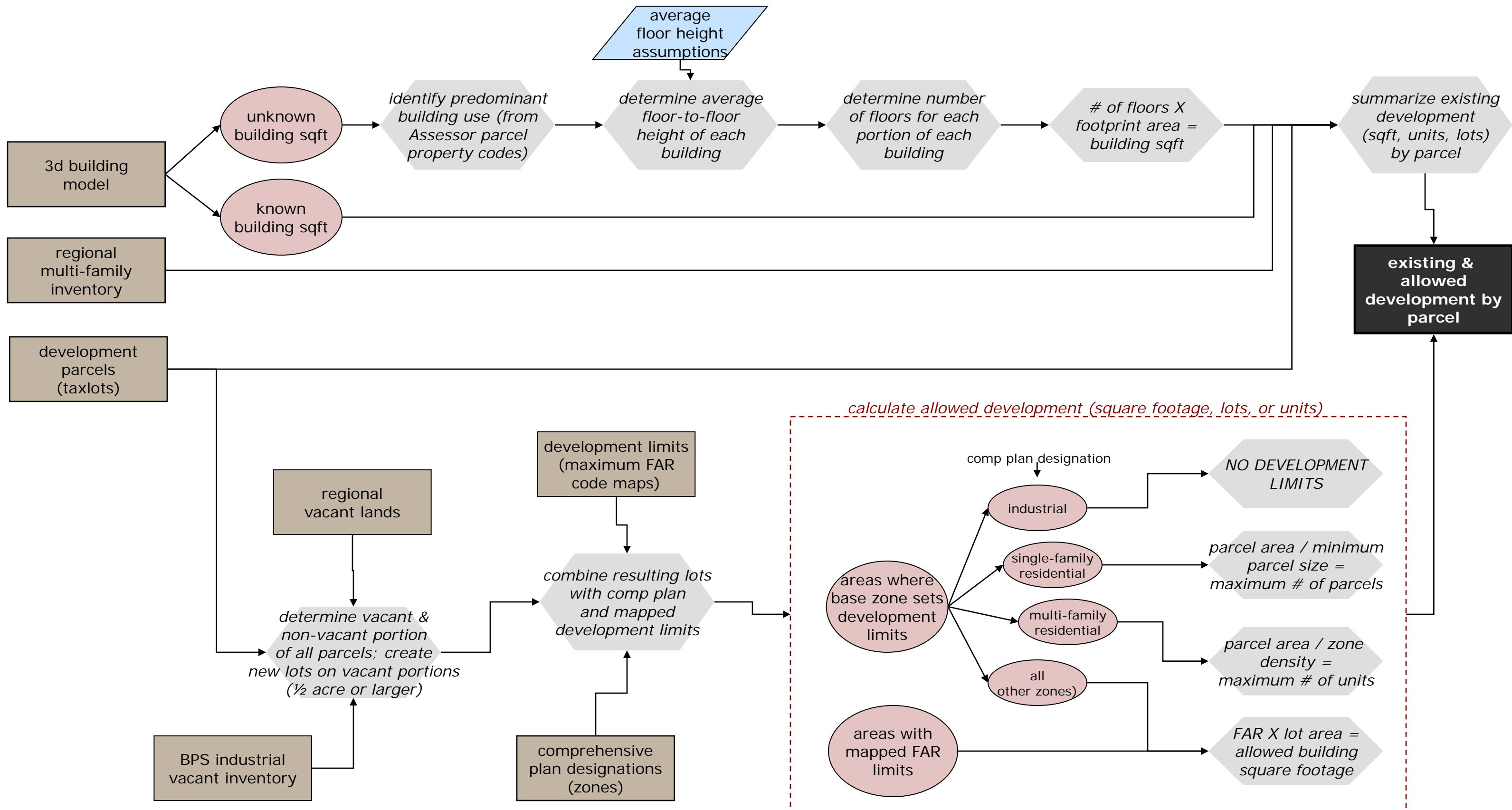
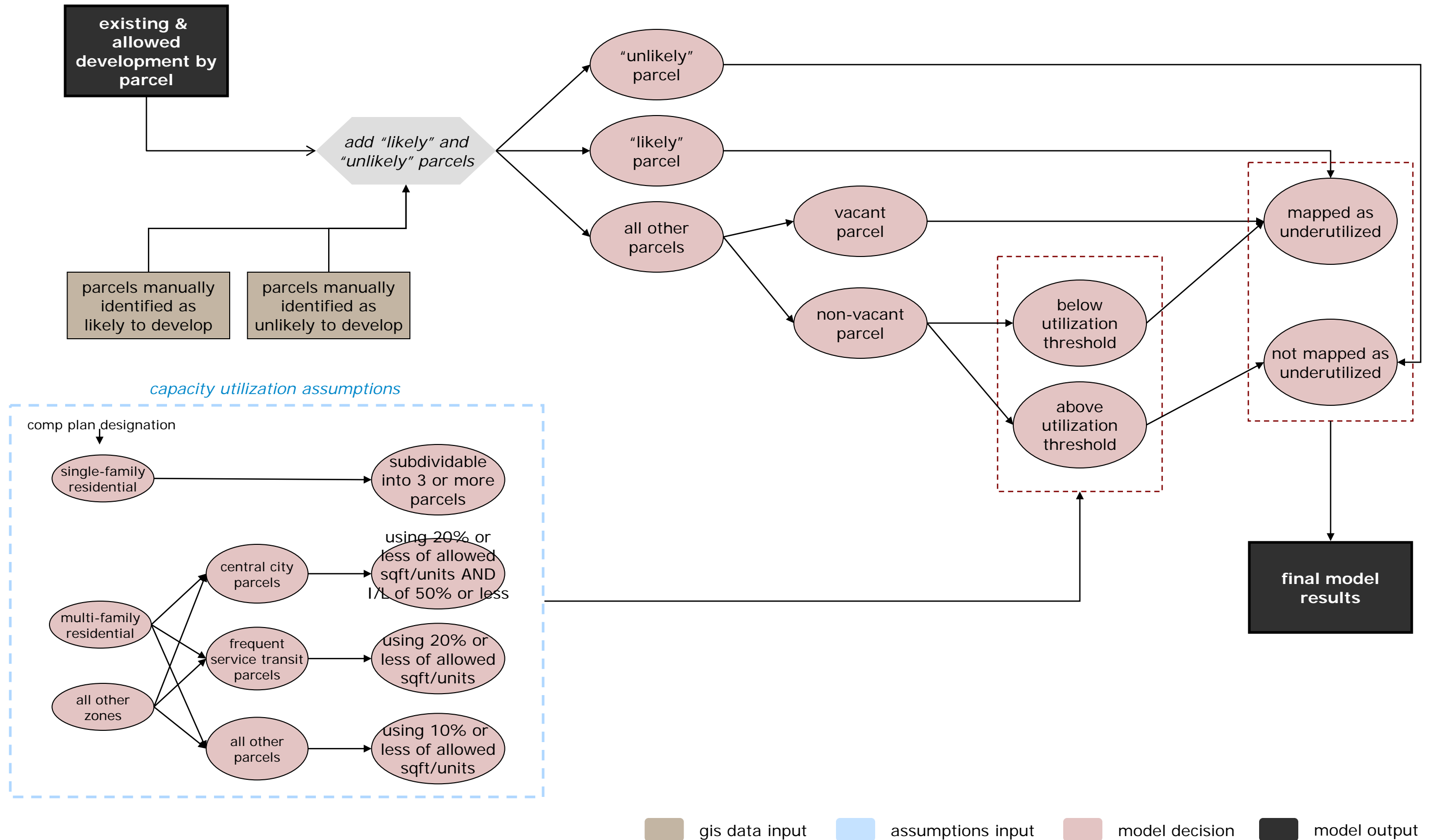


buildable lands inventory gis model | step 1: estimate existing/allowed development

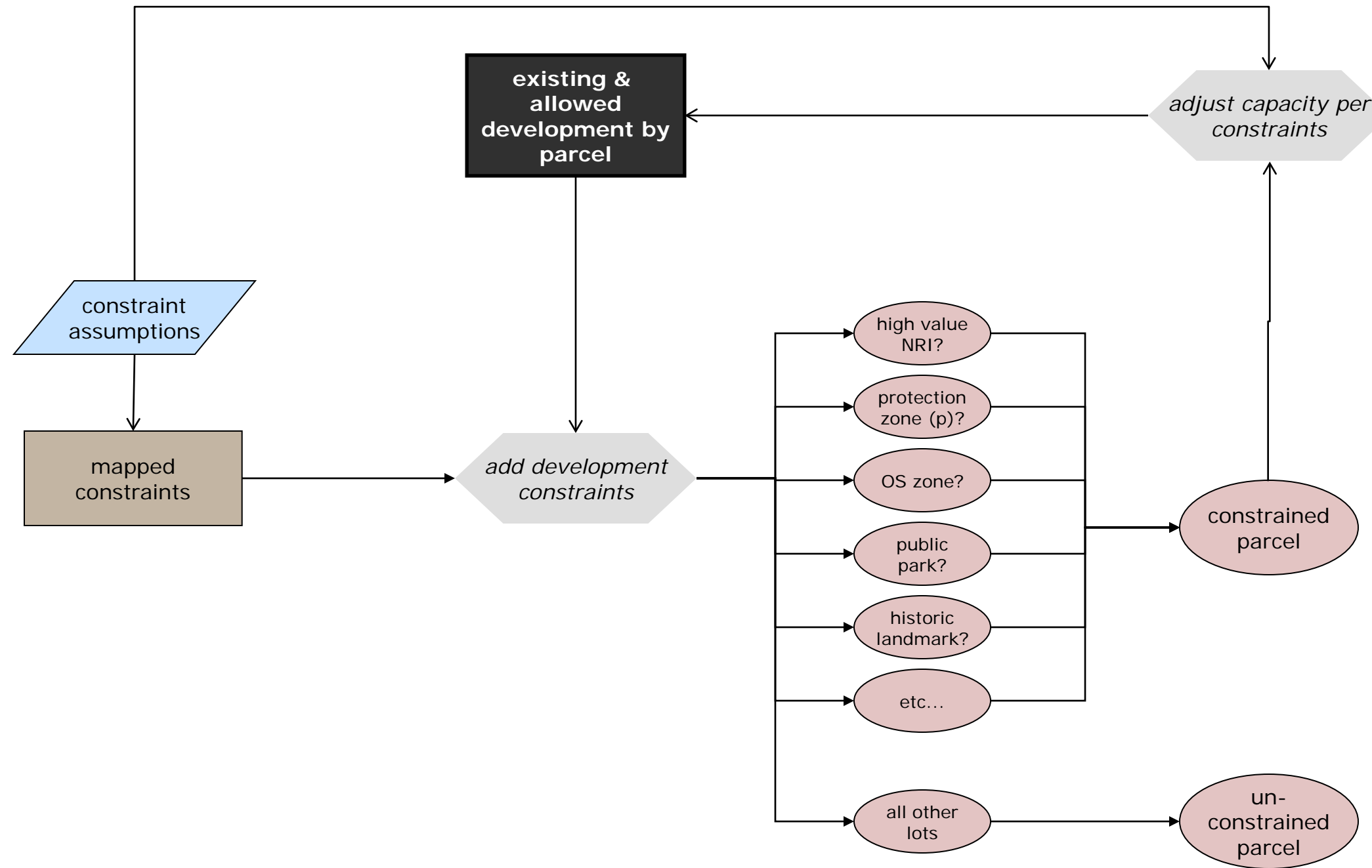


gis data input
 assumptions input
 model decision
 model output

buildable lands inventory gis model | step 2: identify "underutilized" parcels



buildable lands inventory gis model | step 3: identify “constrained” properties



buildable lands inventory gis model | step 4: allocate housing and jobs forecast

